



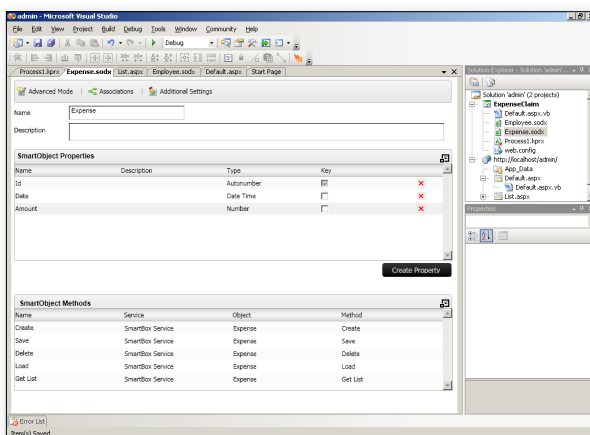
K2 provides multiple design tools that enable anyone to actively participate in the creation of dynamic business applications.

K2 allows business users, developers and domain experts to participate in the design and creation of processes, reports, forms and policies; and they can use what's been built to rapidly assemble applications that help drive business.

K2's unique modeling experience offers multiple, interchangeable canvases and tools (K2 Web Designer, K2 Studio Designer or K2 Visio Designer). K2 abstracts the view information from the underlying definitions to ensure that the core definition is the same, regardless of the canvas or tool. The result is a solution platform that allows each participant in the process-modeling experience, regardless of role (business user, technologist, domain expert), to use the modeling environment in which they are most comfortable.

Designing business entities

The K2 platform reduces the cost of creating, managing and making use of business information that exists across any number of line-of-business systems. It allows for decision making, routing and reporting based on 360-degree visibility into business entities—K2 SmartObjects—such as customers, employees, orders and invoices.

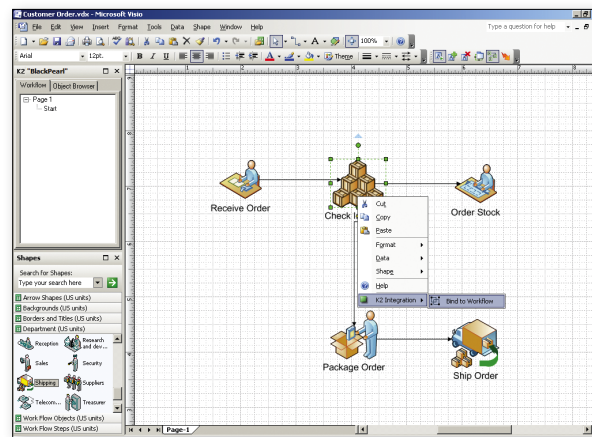


SmartObjects can be composed within K2 Studio Designer and centrally stored for use by processes, forms, SharePoint or other .NET applications. Business users can also create simple SmartObjects through Web tooling. K2 blackpearl includes

out-of-the-box support for Salesforce.com and SharePoint, and it will support connectivity through BizTalk 2006 R2 Adapters.

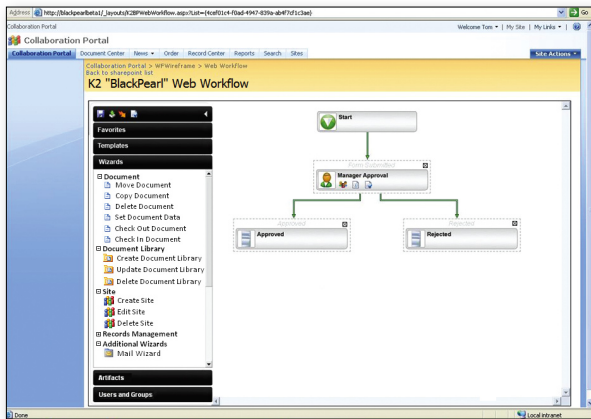
Designing processes

Visio There are no stencil requirements when using K2 within Visio—simply use any of the built-in stencils that come with Visio. A user can open any previously created Visio 2007-compatible diagram, and the K2 Visio Designer also takes advantage of all the easy-to-use wizards available in other K2 design canvases.

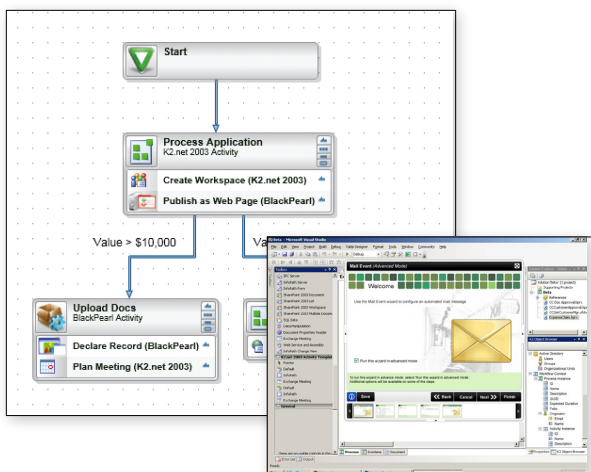




Web and SharePoint Business users can visually model, build and deploy processes using the K2 Web Designer, available directly within a browser or surfaced within SharePoint 2007. The K2 Web Designer offers a set of built-in workflow options to design workflows for libraries and lists in a SharePoint site collection. Within SharePoint, the user has the option to select Outcome Templates and Document Wizards. Outcome Templates describe one or more actions a user can take, while Document Wizards define what happens to a document or list item as a result of each action.



K2 Studio Designer In Studio Designer – which is essentially Visual Studio enhanced with K2 components – users can visually model, build, debug and deploy processes. In this environment, developers simply drag and drop components onto the process-design canvas. Windows Presentation Foundation-based wizards – including wizards for integrating



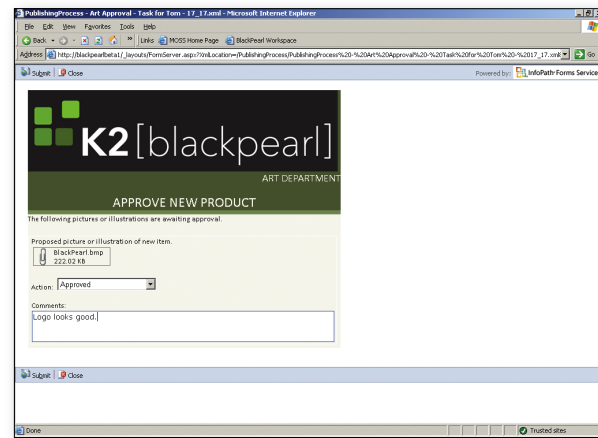
with technologies like SharePoint, sending e-mail, and displaying ASP.NET or Microsoft Office InfoPath 2007 forms – guide the developer through configuration and automatically generate the underlying code, Workflow Foundation schedules files, rules and activities. Developers may use a K2-provided SDK to develop their own custom wizards.

Designing forms

The K2 platform allows anyone to create forms that can leverage processes, policies, actions and events, and information from line-of-business applications.

SmartForms, Custom ASP.NET and WinForms

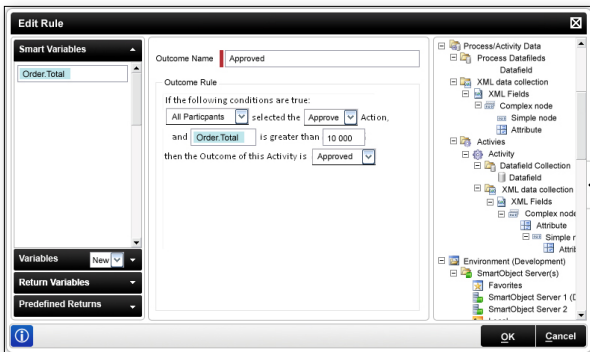
Next-generation K2 SmartForms allow users to easily construct Windows or Web-based (ASP.NET) forms through no-code wizards. Custom ASP.NET, WinForms, and mobile forms can be built and interact with K2 applications through a .NET API or Web services.



InfoPath K2 provides integration with Microsoft InfoPath 2007, allowing users to design browser-compatible forms accessed in conjunction with Microsoft Office SharePoint Server 2007 or Microsoft Office Forms Server 2007. K2 wizards, accessible within the K2 Visio and Studio designers, allow easy configuration of an application that uses an InfoPath form.

Designing rules and policies

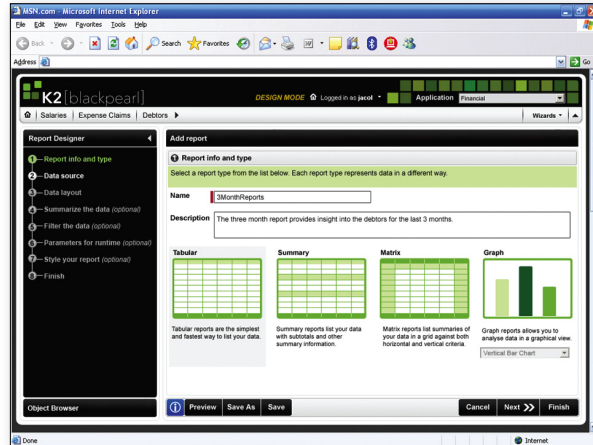
K2 abstracts the business policies from the process by implementing a scalable and extensible policy engine. The engine leverages natural language technology to allow both technical and business users to take full ownership of their business policies. Business users define business logic in a natural domain-specific language (DSL). For example, a sales manager can construct a policy using “when sales per region are less than target sales per region.” They can build this query in a user-friendly interface that makes use of industry- or department-relevant grammar files.



Developers can build logical constructs, which can be mapped to DSL grammars, using common development logic (“if/then/else,” “which,” “switch,” etc.) and data types (“string,” “Boolean,” “double,” etc.).

Designing reports

K2 reporting tools enable simple creation and execution of reports based on corporate information and appropriate level of security. Accessible information may include application or process information that exists within K2 applications and information made accessible through the platform’s ability to connect with other line-of-business systems.



The Web-based report designer allows users to build business-centric reports with real-time filtering such as “Sales for Current Quarter in North America Region.” Users can design personalized reports or share them with colleagues. K2 reports subscribe to the security infrastructure of the platform, ensuring that all users who execute a report only see the information they are permitted to see.

K2 reports leverage the SQL Server 2005 Reporting Services platform for storing and rendering reports. This allows any Reporting Services-compatible tool, such as Business Intelligence Studio, to create and access the Report Definition Language (RDL) generated reports.



WHAT NOW?

For more information on the K2 platform, please visit [K2.com](http://www.k2.com).

If you have any questions concerning K2 products and services, please visit www.k2.com/global/contactus.aspx.

Visit <http://www.k2.com/contact.aspx> to locate your nearest K2 office.

CORPORATE HEADQUARTERS

4042 148th Avenue NE
Redmond, WA 98052
USA
PH +1 (425) 883 4200
FAX +1 (425) 671 0411

EMEA HEADQUARTERS

26 Worples Road
Wimbledon
London
SW19 4EE
UK
PH +44 (0) 845 612 0912
FAX +44 (0) 845 612 0911

APAC HEADQUARTERS

9 Shenton Way #06-02
Singapore
068813
PH +65 6327 4110
FAX +65 6327 4120

[WWW.K2.COM]

The information provided relates to pre-release software products, may include features only available after installation of additional add-ins, and may be substantially modified before the commercial release. This information is provided for informational purposes only, and SourceCode Technology Holdings, Inc., makes no warranties, expressed or implied, with respect to this document or the information contained within it.

Copyright © 2007. SourceCode Technology Holdings Inc. All rights reserved. Patents pending. SourceCode, K2 and K2 blackpearl are registered trademarks or trademarks of SourceCode Technology Holdings, Inc., in the United States and/or other countries. The names of actual companies and products mentioned herein may be the trademarks of their respective owners.