

K2 [blackpearl] AND VISUAL STUDIO 2005

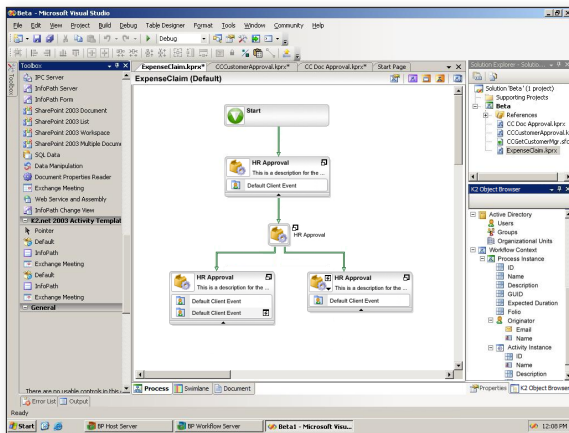


K2 Studio is a fully integrated extension of Visual Studio that enables developers to build dynamic business applications.

K2 Studio is Visual Studio enhanced with K2 components. It supports a full range of capabilities for process modeling, building and deployment of solutions. It supports team-based environments for collaborative development and includes varying role-appropriate tooling.

Modeling and building processes

K2 blackpearl provides a unique process-modeling experience that supports multiple, interchangeable canvases and tools. K2 blackpearl abstracts the view information from the process definition to ensure that the core process definition is the same, regardless of the canvas or tool. The result is a solution platform that allows each participant in the process modeling experience, regardless of role (business user, technologist, domain expert), to use the modeling environment in which they are most comfortable. Developers can view, extend and share designs with other users leveraging browser- and Visio-based design tools, or they can leverage custom and third-party design canvases.



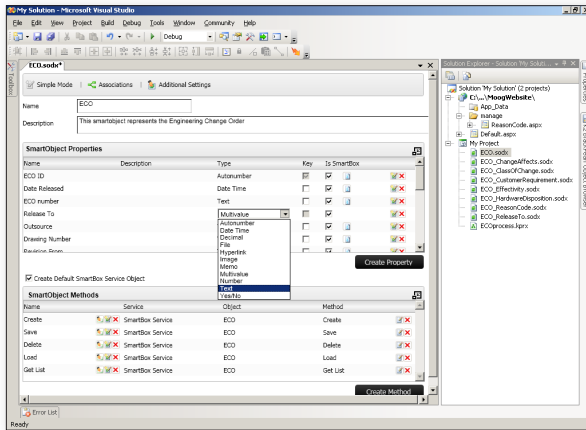
In the K2 Studio environment, developers simply drag and drop components onto the process-design canvas. Windows Presentation Foundation-based wizards – including wizards for integrating with technologies like SharePoint, sending e-mail and displaying ASP.NET or Microsoft Office InfoPath 2007 forms – guide the developer through configuration and automatically generate the underlying code, Workflow Foundation schedules files, rules and activities. Developers may use a K2-provided SDK to develop their own custom wizards. Processes built in blackpearl are extensible. K2 blackpearl leverages .NET 3.0 – including Workflow Foundation (WF), Windows Communication Foundation (WCF) and Windows Presentation Foundation (WPF) – so developers can open and extend processes within the WF design canvas or directly through custom C# code.

Building business entities

K2 blackpearl provides a platform that reduces the cost of creating, managing and making use of business information that may exist across any number of line-of-business systems. It allows for decision making, routing and reporting based on 360-degree visibility into business entities such as customers, employees, orders and invoices. Its SmartObject designer provides a visual interface that allows developers to build and deploy these



composite entities. The developer can create properties and methods, create associations between entities, and link fields to data surfaced from line-of-business systems through K2-provided technology, Web services, or the K2 ADO.NET data provider. It should read "Line-of-business security is respected and may also be set on individual properties within the SmartObject designer. All information is stored declaratively and interpreted at runtime for flexibility. Entities can be created and used locally or shared for use by other developers.



Assembling solutions from reusable items

K2 blackpearl allows users to create and store items that can be reused and shared between stakeholders. A person can then use these items to quickly assemble dynamic business applications that are error-free and adaptable. Items that can be created and shared include wizards, business entities that aggregate data across applications and line-of-business systems [SmartObjects], processes, reports, and environment information. Many of these items are stored and accessible through the blackpearl object browser, which includes access to:

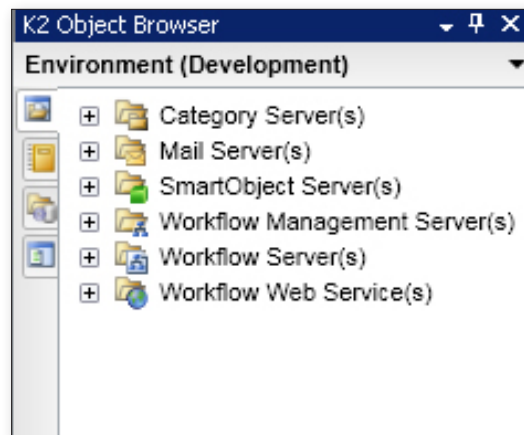
The **workflow context browser** surfaces critical process data for use in configuring business processes. This includes attributes of the process, like its folio and originator, process activities and lines.

The **user browser** represents the user management subsystem which drives K2 blackpearl interactions with people involved during the business process lifecycle at runtime.

The **process and activity data browser** is a list of all data and XML fields stored with the process and allows developers to manage these data fields directly.

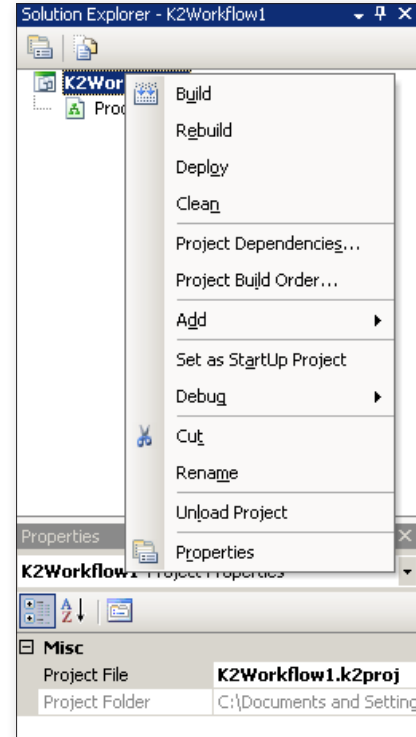
The **environment library** contains connection information for servers across multiple environments that participate in hosting or deploying K2 blackpearl dynamic business applications for use in streamlining deployment. These can include blackpearl servers, as well as third-party servers such as Microsoft Office SharePoint Server 2007 or Salesforce.com.

SmartObjects that have been either created locally or deployed globally are available for use in creating applications, process definitions and composite SmartObjects.



Building and deploying

The Solution Explorer exposes the K2 blackpearl project and associated dependencies. It includes a context menu to build, deploy and add new items to K2 blackpearl projects. Behind the scenes, MSBuild is used for building, packaging and deploying K2 blackpearl solutions. All project assembly references are automatically added when a new K2 blackpearl project or process definition is created. K2 blackpearl projects can also be included in a single solution file with standard .NET artifacts like ASP.NET pages and Windows Forms. InfoPath solutions are integrated into the project system, ensuring the InfoPath form templates files and their associated K2 blackpearl projects remain in sync for versioning and deployment. Further, developers will have one-click InfoPath design-time access to all InfoPath form templates included within a K2 blackpearl project.





WHAT NOW?

We will be happy to advise you further on how the complementary technologies of K2 blackpearl and Visual Studio 2005 can be leveraged to meet the requirements of your business.

For more information on the K2 platform, please visit K2.com.

If you have any questions concerning K2 products and services, please visit www.k2.com/global/contactus.aspx.

Visit <http://www.k2.com/contact.aspx> to locate your nearest K2 office.

CORPORATE HEADQUARTERS

4042 148th Avenue NE
Redmond, WA 98052
USA
PH +1 (425) 883 4200
FAX +1 (425) 671 0411

EMEA HEADQUARTERS

26 Worples Road
Wimbledon
London
SW19 4EE
UK
PH +44 (0) 845 612 0912
FAX +44 (0) 845 612 0911

APAC HEADQUARTERS

9 Shenton Way #06-02
Singapore
068813
PH +65 6327 4110
FAX +65 6327 4120

[WWW.K2.COM]

The information provided relates to pre-release software products, may include features only available after installation of additional add-ins, and may be substantially modified before the commercial release. This information is provided for informational purposes only, and SourceCode Technology Holdings, Inc., makes no warranties, expressed or implied, with respect to this document or the information contained within it.

Copyright © 2007. SourceCode Technology Holdings Inc. All rights reserved. Patents pending. SourceCode, K2 and K2 blackpearl are registered trademarks or trademarks of SourceCode Technology Holdings, Inc., in the United States and/or other countries. The names of actual companies and products mentioned herein may be the trademarks of their respective owners.