

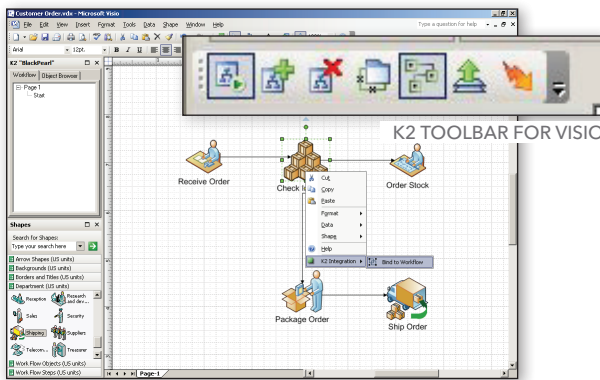


K2® brings to life business processes modeled in Microsoft Visio.

Microsoft Visio helps people create professional-looking diagrams of all types. Most software programs of its kind rely on the users' artistic skills to make advanced drawings. But with Microsoft Office Visio 2007, it is as easy as opening a template and dragging the icons and stencils onto the canvas. Many companies already own Visio, and often it is already deployed to the process owners' desktops. By using the K2 Designer for Visio, processes can be built and deployed from within the Visio environment. The Visio designer leverages a familiar tool set and exposes the K2 tools for easy integration of drawings with process modeling. Now the K2 Designer for Visio can take these diagrams and bring them to life.

Designing processes with Visio 2007

With K2, anyone can visually model and build processes within Visio. Often organizations have spent significant time and money to map business processes within Visio diagrams. K2 allows a user to leverage existing Visio diagrams or create new processes within Visio.



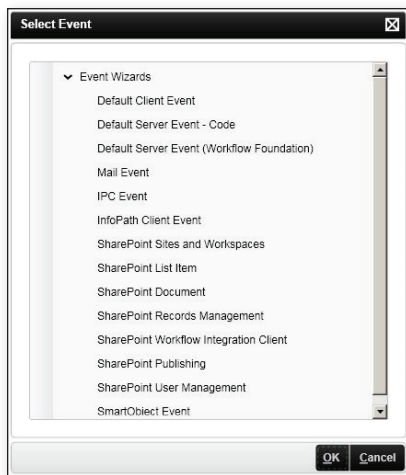
VISIO ENABLED BY K2

K2 Designer for Visio is an add-in to Visio 2007. There are no stencil requirements – simply use any of the built-in stencils that come with Visio. A user can also open any previously created, Visio 2007-compatible diagram. This allows the designer to use a classic “lines and boxes” diagram, a floor plan, a swim-lane diagram or any other diagram that may have been used in the past to visualize the process. Many

companies have a backlog of process diagrams just waiting to be brought to life.

The person designing the process can choose between two means of process-enabling Visio diagrams: by activity or by process. A designer can automate processes in an ad-hoc fashion, choosing shapes and then binding those shapes to events. For example, a designer might open an existing legacy Visio diagram and then manually enable activities by selecting the shape, right clicking, and configuring an event (such as sending an e-mail or publishing a document) through a wizard. Alternatively, a designer can create a new process and enable the entire surface, thereby prompting the user to tie the shape to an event or rule when the shape is first dropped onto the design surface.

There are no specific 1-shape-to-1-step limitations. This is too restrictive for some advanced processes or those that may follow alternative diagramming methods (e.g. by a floorplan). Multiple shapes may be used to define various steps, the participants and the decisions to be made. These can be grouped together in Visio and treated as a single K2 activity. Then the process author can begin assigning workflow steps to each stencil item or group of stencil items.



The K2 Designer for Visio also takes advantage of all the easy-to-use wizards available in other K2 design canvases. This benefit allows customers to have a simple, Visio-based experience, while at the same time leveraging the power the K2 feature set has to offer.

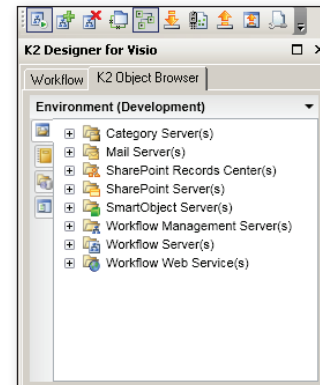
Sharing and deploying

The K2 Designer for Visio design experience is not limited by what is available out-of-the-box. The platform is intended for collaboration and extension. For example, developers can create custom artifacts and preconfigured wizards with steps and actions for use by Visio process designers. Process designers can also assign users and groups from Active Directory to specific tasks, allowing for centralized and simplified user and group management across all processes and applications.

Process designers can also work with developers to extend capabilities that can't be solely enabled through available wizards. Processes can be shared via a process definition server directly from Visio. A

developer is then able to open the process model and any preconfigured activities directly within K2 Studio Designer. The developer can use a full set of K2 tools, Visual Studio tools, and custom code to complete the process logic. The developer can check in the file for validation by the process designer. The process designer can reopen the process within Visio. If the developer creates objects that Visio is unable to interpret, the K2 Designer for Visio will allow the user to create associations between a Visio shape and the orphaned object.

Different deployment methods are available with K2. The process designer can be given permission to publish and deploy a process directly from Visio to a development, test or production server. Alternatively, access to these servers may be limited to developers or quality assurance in order to validate and test the process before publishing.



WHAT NOW?

We will be happy to advise you further on how the complementary technologies of the K2 platform and Visio 2007 can be leveraged to meet the requirements of your business.

Please visit <http://www.k2.com/contact.aspx> to locate your nearest K2 office.

CORPORATE HEADQUARTERS

4042 148th Avenue NE
Redmond, WA 98052
USA
PH +1 (425) 883 4200
FAX +1 (425) 671 0411

EMEA HEADQUARTERS

26 Worple Road
Wimbledon
London
SW19 4EE
UK
PH +44 (0) 845 612 0912
FAX +44 (0) 845 612 0911

APAC HEADQUARTERS

9 Shenton Way #06-02
Singapore
068813
PH +65 6327 4110
FAX +65 6327 4120

[WWW.K2.COM]

This information is provided for informational purposes only, and SourceCode Technology Holdings, Inc., makes no warranties, expressed or implied, with respect to this document or the information contained within it.

Copyright © 2007. SourceCode Technology Holdings Inc. All rights reserved. SourceCode, K2 and K2 blackpearl are registered trademarks or trademarks of SourceCode Technology Holdings, Inc., in the United States and/or other countries. The names of actual companies and products mentioned herein may be the trademarks of their respective owners.