



## Together, K2™ and Microsoft Office SharePoint Server 2007 (MOSS) provide a robust platform for **delivering solutions that involve people and processes.**

K2 provides the tools to design, build and manage process-driven applications. When augmented with MOSS, businesses add rich capabilities for managing content and fostering collaboration.



### Process-driven applications

K2 enables organizations to design, execute, manage and control true enterprise-level, process-driven applications. The K2 platform allows a user to abstract the underlying complexity of building solutions, and it encourages developers and business users to collaboratively design and manage solutions. It allows people to quickly increase business efficiency, enhance corporate visibility, discover and realize process improvements, and offer new services.

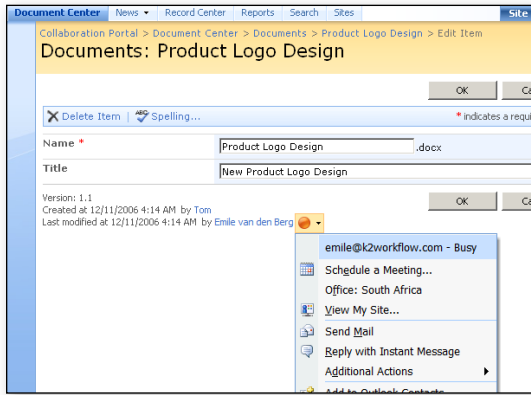
K2 leverages existing investments in software infrastructure to deliver robust enterprise solutions. Specific Microsoft interoperability includes Microsoft Exchange, Office, InfoPath, BizTalk, Live Communications Server, Visio and MOSS. In the case of MOSS, K2 can be used to build powerful solutions for managing content, when collaborating or when MOSS is used as a central location to manage corporate information.

**> Please contact us for the complete K2 story.**



### K2-powered content management

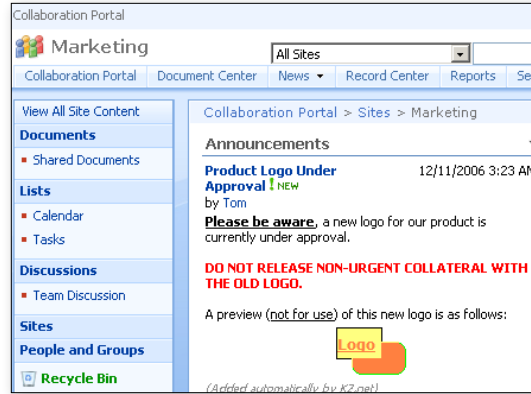
Business processes often include unstructured content (such as documents) and collaboration between participants. In many cases, it is the content or collaboration that triggers steps that must be taken in a more linear form.



As a simple example, a team creating a product-logo-design document could use the collaborative features available in MOSS to work together on designs and concepts. Once satisfied, a team member may manually initiate the design-approval process. Or, the process may be automatically initiated when a new logo is uploaded to a library used for submissions. K2 can leverage MOSS events, including document and list item updates, to initiate activity.

After the design team submits a new product logo, a K2 process could copy the document to a review site for management approval and post an announcement to the marketing site indicating that a new logo is under review. Trademark lawyers and executive stakeholders may be notified for research, recommendations and parallel approval. Escalations may be necessary due to unresponsiveness or to account for participants that may be out of the office.

Once finalized, the logo, ancillary documentation and approval can be saved as a record within MOSS.

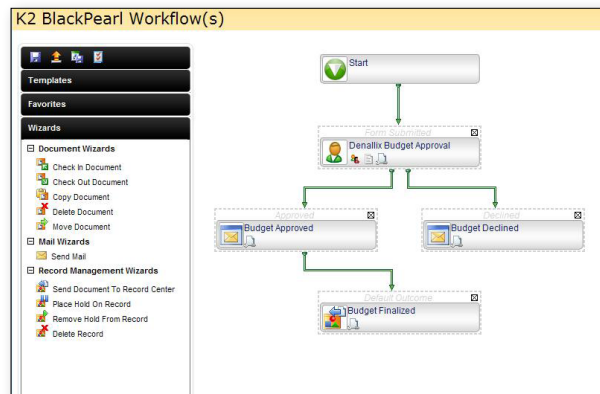


Examples of MOSS content that can be managed by K2:

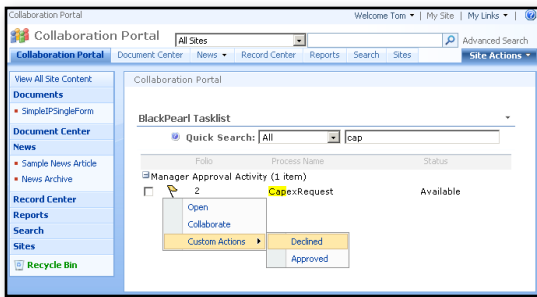
- > Documents and files
- > List items
- > Metadata
- > InfoPath forms
- > Records and holds
- > Permissions
- > Sites

### Designing K2 applications within MOSS

K2 provides a number of design canvases to give an application or process owner the ability to create and manage applications. The K2 Web Designer for SharePoint can be surfaced in MOSS for solutions built to run within the MOSS environment.



For example, the marketing director can build and deploy the logo-approval process using a simple drag-and-drop Web interface. They can route to MOSS users and setup escalations as necessary. They have the ability to create supporting forms and reports. They can reuse common activities leveraged across the business and data from legacy systems. The process is completely executable and supported by the robust capabilities of the K2 Server.



### Delivering K2 information through MOSS

K2 fully manages process tasks, allowing for scenarios that include single approvals, multiple-user voting, re-directions and escalations. Access to outstanding tasks is provided in MOSS through the K2 task list Web part. This includes grouping, dynamic “as-you-type” filtering, multilingual support, task list consolidation across multiple K2 servers, and customizable column choices.

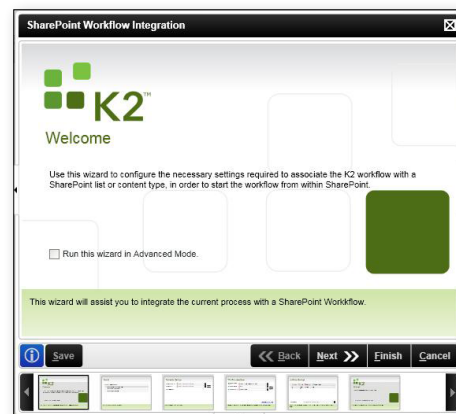
K2 process information is available to MOSS users through integration with the MOSS Business Data Catalog (BDC). All process information is searchable (security is respected) and can be exposed through list columns and BDC Web parts.

### Wizard-driven interoperability

The K2 platform includes wizards to facilitate straightforward interoperability with MOSS. These wizards are step-by-step dialogs that guide the designer through the configuration of all required functionality (without code). These wizards are available to developers working within Visual Studio and process designers working within a K2-enabled Visio environment (K2 Designer for Visio).

K2 provides the following wizards:

- > **Site** – managing sites and site permissions
- > **Library and List** – managing lists and list permissions
- > **Document Manipulation** – working with documents, document permissions and document metadata
- > **List Item** – working with individual items in a list
- > **Records Management** – managing records, record permissions and record attributes
- > **Event Process** – taking action triggered by MOSS events
- > **Publishing** – streamlining collaboration and approvals for Web publishing
- > **User Management** – managing users, groups and permissions
- > **Workflow Integration** – associating K2 processes with MOSS libraries and lists



### WHAT NOW?

We will be happy to advise you further on how the complementary technologies of the K2 platform and MOSS 2007 can be leveraged to meet the requirements of your business.

For more information on the K2 platform, visit [www.k2.com](http://www.k2.com).

Please visit [www.k2.com/global/contactus.aspx](http://www.k2.com/global/contactus.aspx) to locate your nearest K2 office.



**CORPORATE HEADQUARTERS**

4042 148th Avenue NE  
Redmond, WA 98052  
USA  
**PH** +1 (425) 883 4200  
**FAX** +1 (425) 671 0411

**EMEA HEADQUARTERS**

26 Worples Road  
Wimbledon  
London  
SW19 4EE  
UK  
**PH** +44 (0) 845 612 0912  
**FAX** +44 (0) 845 612 0911

**APAC HEADQUARTERS**

9 Shenton Way #06-02  
Singapore  
068813  
**PH** +65 6327 4110  
**FAX** +65 6327 4120

[ [WWW.K2.COM](http://WWW.K2.COM) ]

This information is provided for informational purposes only, and SourceCode Technology Holdings, Inc., makes no warranties, expressed or implied, with respect to this document or the information contained within it.

Copyright © 2007. SourceCode Technology Holdings Inc. All rights reserved. SourceCode, K2, K2.net and K2 blackpoint are registered trademarks or trademarks of SourceCode Technology Holdings, Inc., in the United States and/or other countries. The names of actual companies and products mentioned herein may be the trademarks of their respective owners.